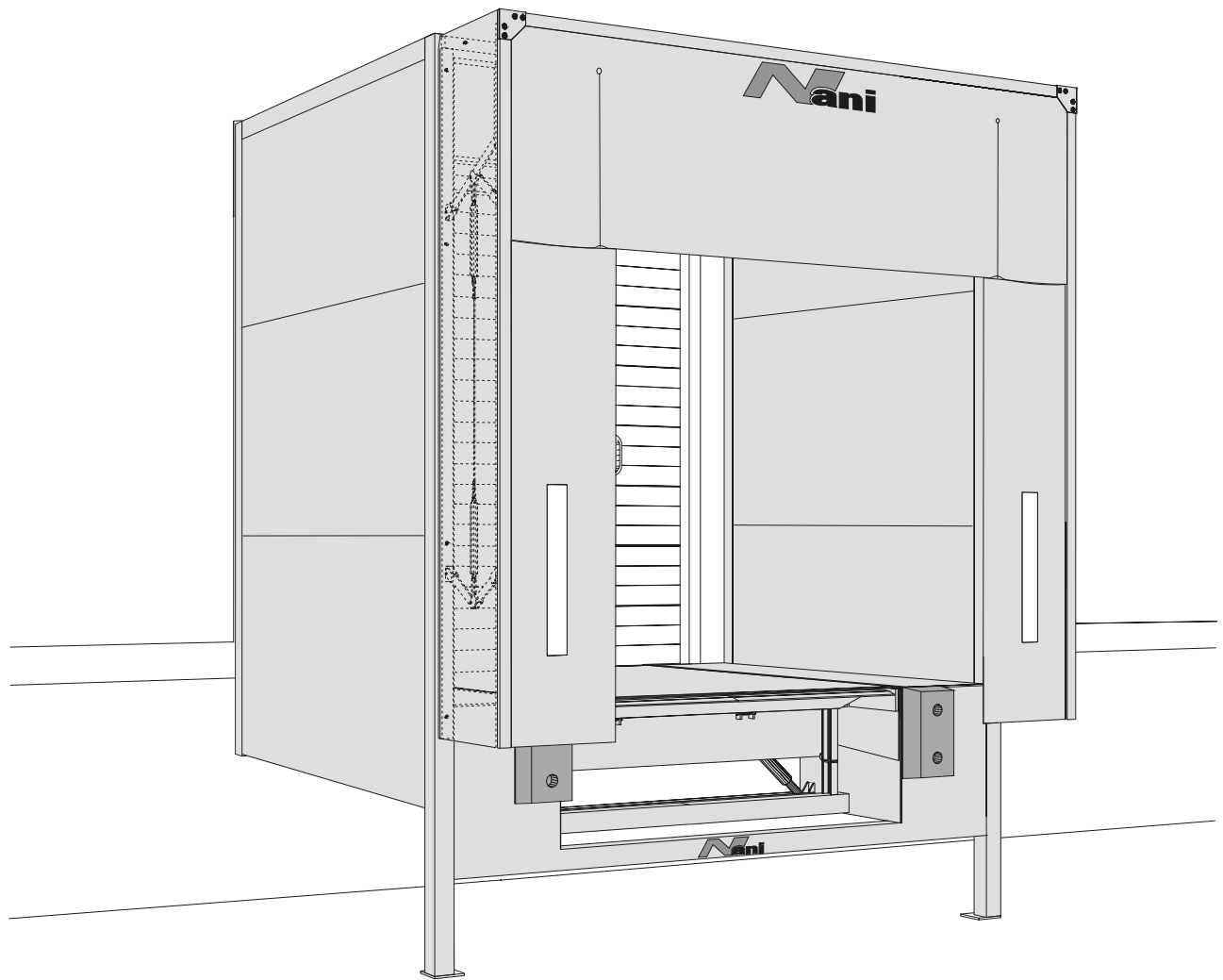


NANI Insulated Loading House



The NANI Insulated Loading House is a bolt on type of structure and can be added to almost any type of main building.

It is the ideal solution to adding a loading bay to an existing building or a new building under construction.

The loading house is a steel shell clad in insulated panels. Incorporated in the steel shell

is a NANI-Dockleveller which has a purpose built tail-lift slot.

On the front of the loading house a NANI dockshelter is installed to complete the totally insulated system.

Insulated doors, loading lights, vehicle wheel guides can all be supplied by NANI to complete your project to the highest standard.

Changes to specification maybe made without prior notification.

TH7-9410-E

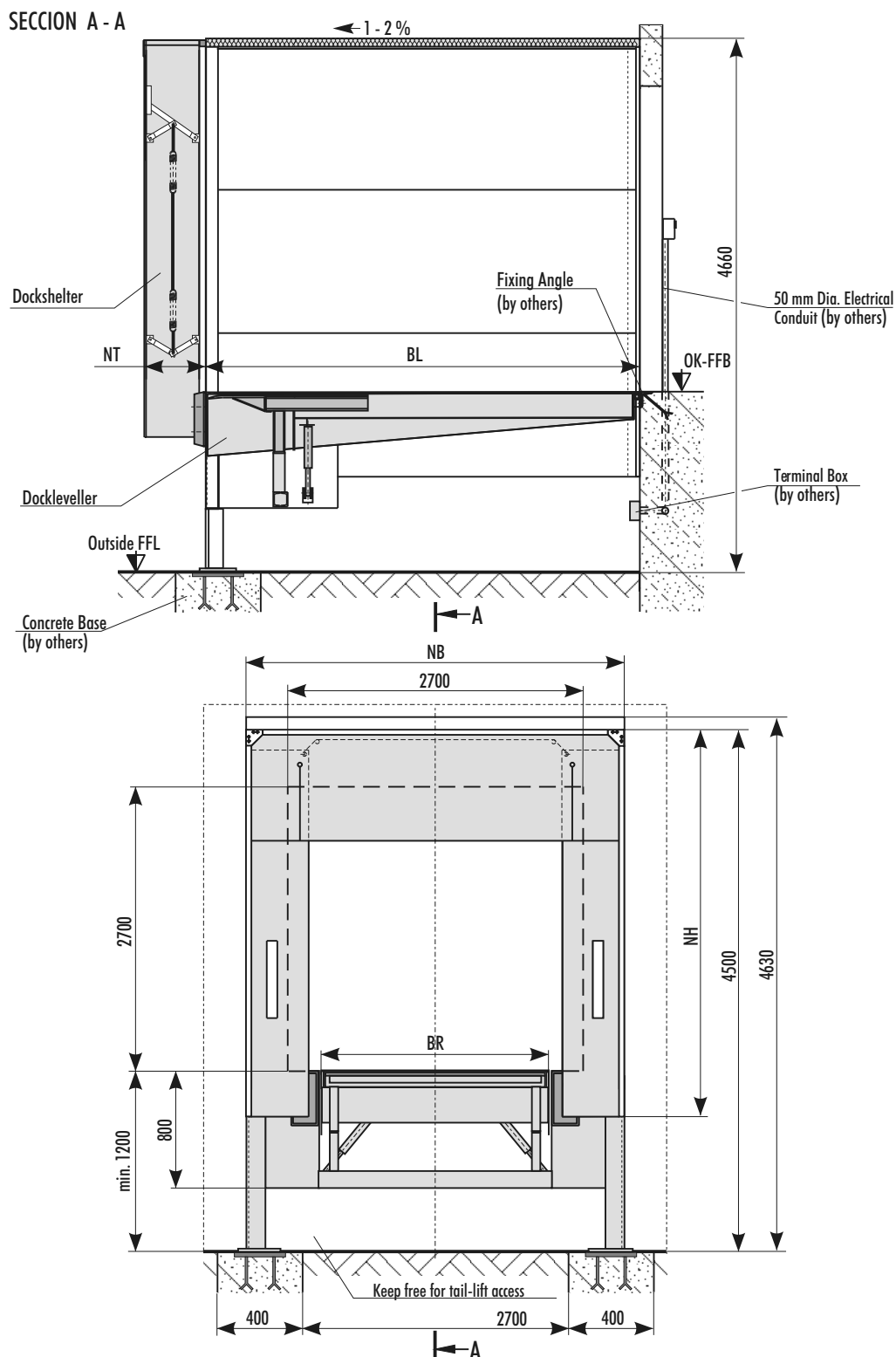


...for optimal loading

<http://www.nani.de> E-mail: info@nani.de

Nani Verladetechnik GmbH & Co. KG
Siegerslebener Str. 12, D-39365 Eilsleben
Tel: (039 409) 914 0, Fax: (039 409) 345

NANI Insulated Loading House. Installation Drawing

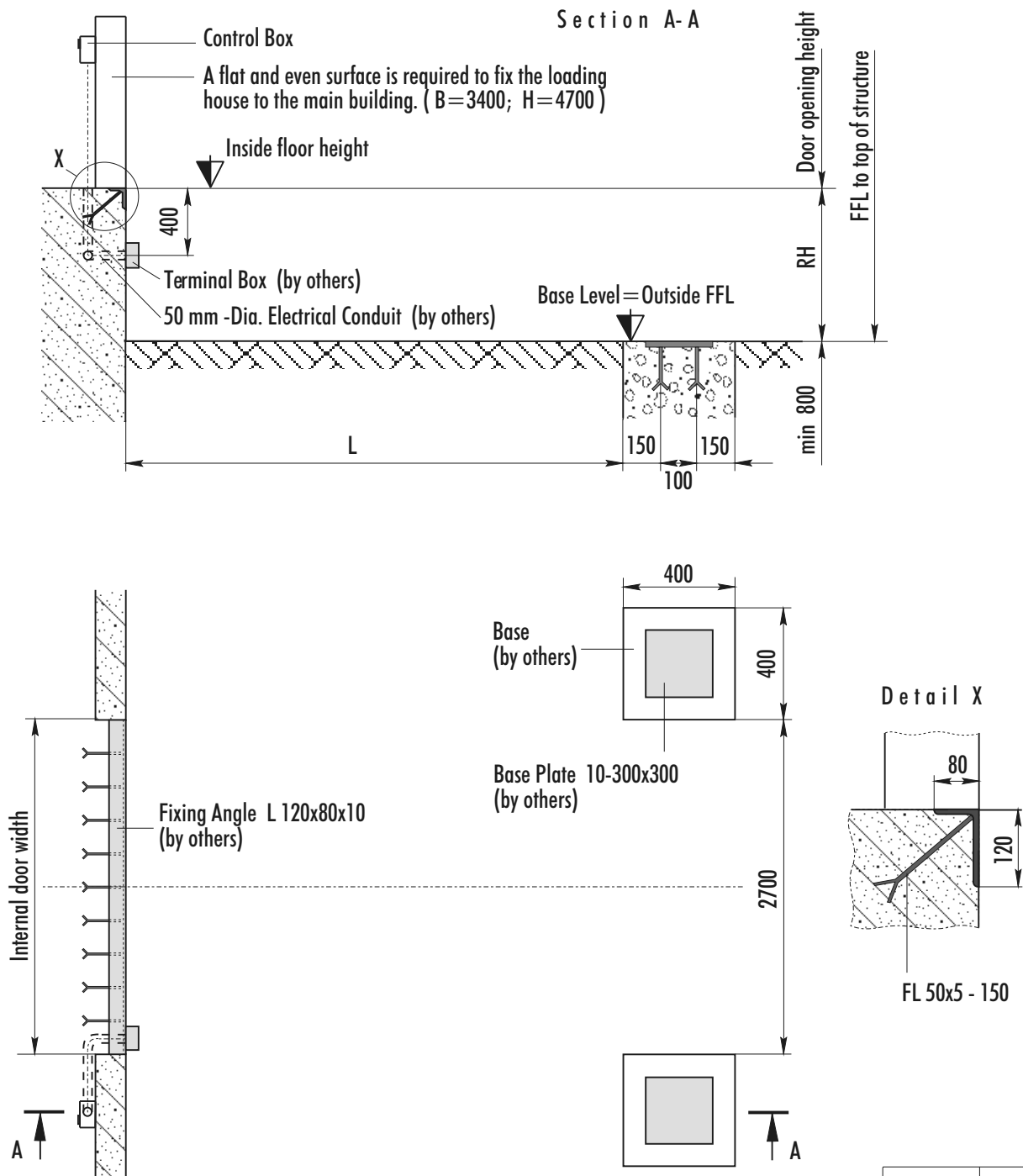


Sizes	BR	BL	NB	NH	NT
1	2000	2050	3300	3600	600
2	2000	2550	3300	3600	600
3	2000	3050	3300	3600	600
4	2000	4050	3300	3600	600

Changes to specification maybe made without prior notification.

TH8-2410-E

NANI Insulated Loading House. Building requirements prior to installation.



BL-Built in length of dockleveller

RH - Dockheight

Fixing angle, concrete base steel base plate and electrical conduit along with electrical wiring terminal box are all by others.

Changes to specification maybe made without prior notification.

BL	L
2000	1700
2500	2200
3000	2700
4000	3700

TH2-9306-E

Nani
VERLADETECHNIK

...for optimal loading
<http://www.nani.de> E-mail: info@nani.de

Nani Verladetechnik GmbH & Co. KG
Siegerslebener Str. 12, D-39365 Eilsleben
Tel: (039 409) 914 0, Fax: (039 409) 345