

The NANI Dockshelter Range Model P-TAD / LP-TAD

A. Description

The dockshelter frame is constructed from high quality galvanised steel profiles. Curtain materials are high quality-high strength 3 mm thick PVC. Headcurtains can be either single or double thickness, and either solid or split configuration. Collapsible models have side link arms which operate via spring and cable tensioners. Should vehicles make contact with either side or head frames during movements onto the dock the shelter will collapse back to the wall and returns to the normal position when the vehicle pulls away. This greatly reduces the possibility of damage.

The steel profiles and front corner supports are assembled in such a way as to create an extremely stable structure which keeps its shape and aesthetic look at all times. The head curtain can be split double thickness PVC or single thickness as standard.

Side curtain are manufactured with a white guide strip to assist the driver in lining up his vehicle and park correctly at the dock.

Dockshelters can be manufactured to suit all types and sizes of vehicles.

B. Technical data

1. Demensions

Standard sizes 1-4
other sizes on request at extra cost

2. Steel frame

Special steel roller profiles all galvanised finish

3. Curtains

- a. 3 mm thick PVC with double woven interlay of polyester monofilament for added strength.
- b. Tear proof to DIN 53354
Longitudinal direction: ca. 7700 N
Crossways direction: ca. 4700 N
- c. Further tear strength to DIN 53354
Longitudinal direction: ca. 1000 N
Crossways direction: ca 650 N
- d. Flame proof to DIN 75200
- e. Colour Anthracite grey

4. Roof and side material

- a. 0,5 mm thick PVC material with single polyester filament
- b. Tear proof to DIN 53354
Longitudinal direction: ca. 2200 N
Crossways direction: ca 2200 N
- c. Further tear strength to DIN 53354
Longitudinal direction: ca. 200 N
Crossways direction: ca 200 N
- d. Flame proof to DIN 75200
- e. Colour Anthracite grey

5. The ecological friendly dockshelter (extra price)

All curtain material is environment friendly PVC free Neoprene.

6. Rainwater channel (extra price)

Rainwater channel built into shelter roof. Water is then dispersed to either side of

shelter and not onto the roof of the vehicle.

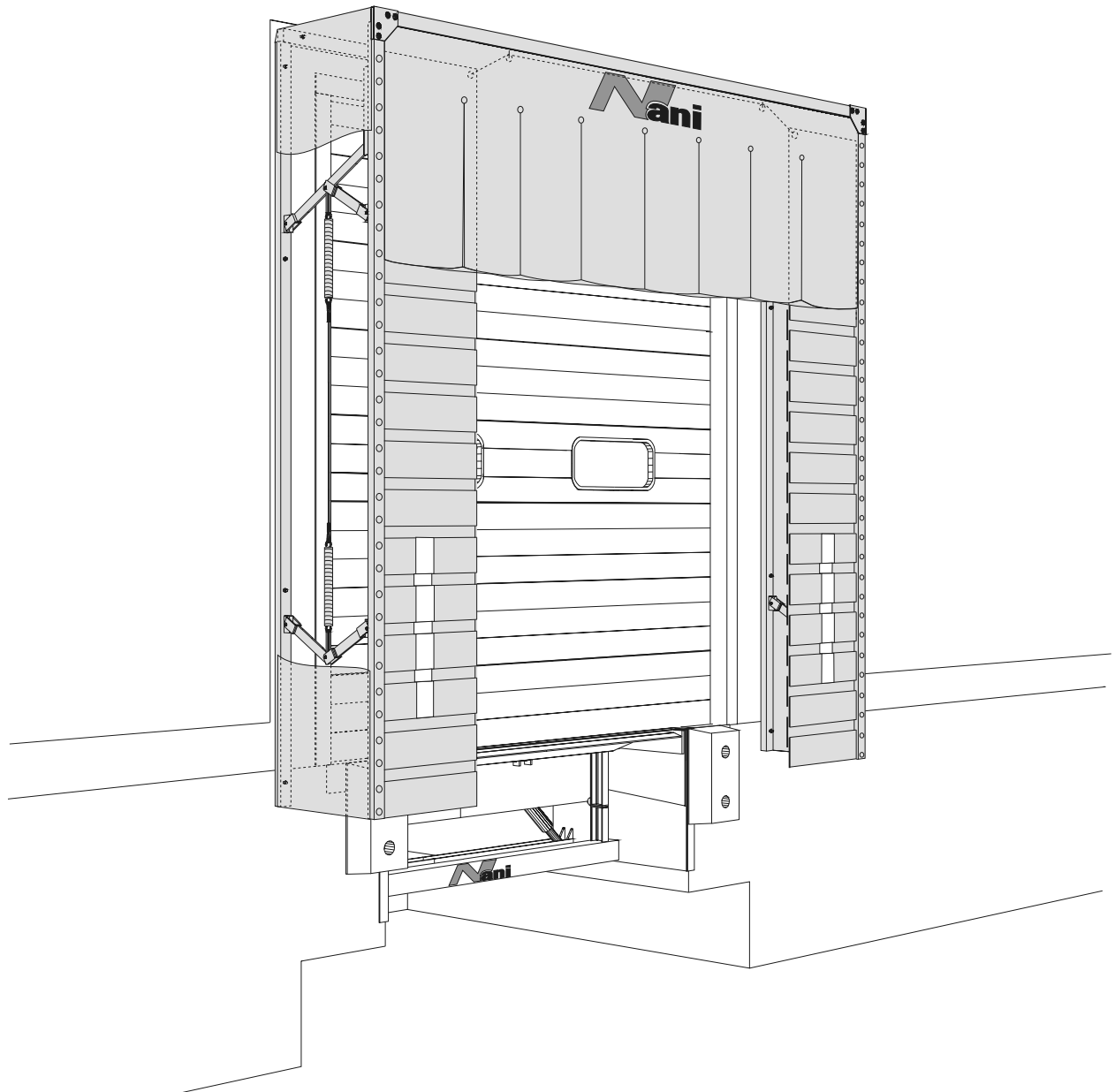
7. Steel reinforces rubber flaps (extra price)

These rubber flaps can be installed at intervals behind the side curtains to give added strength and resistance to high winds.

8. Corner cushions (extra price)

To seal off the bottom corner either side of the shelter when the vehicles parked at the dock.

NANI-Dockshelter Model L-TAD



NANI Model L-TAD is a heavy duty dock shelter with a frame of steel profiles and collapsible mechanism. The side curtains are made up of 9 mm thick steel reinforced rubber flaps, these flaps are installed into the side frame in an overlapping situation.

The head curtain is double thickness 3 mm PVC. It has vertical slats formed into the head curtain and again this is installed into an overlapping situation. This combination gives you a very hard wearing dockshelter even under the harshest of conditions.

Changes to specification maybe made without prior notification.

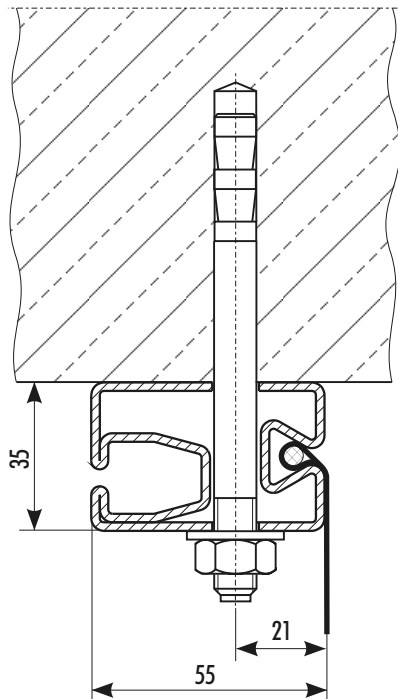
Nani
VERLADETECHNIK

...for optimal loading
<http://www.nani.de> E-mail: info@nani.de

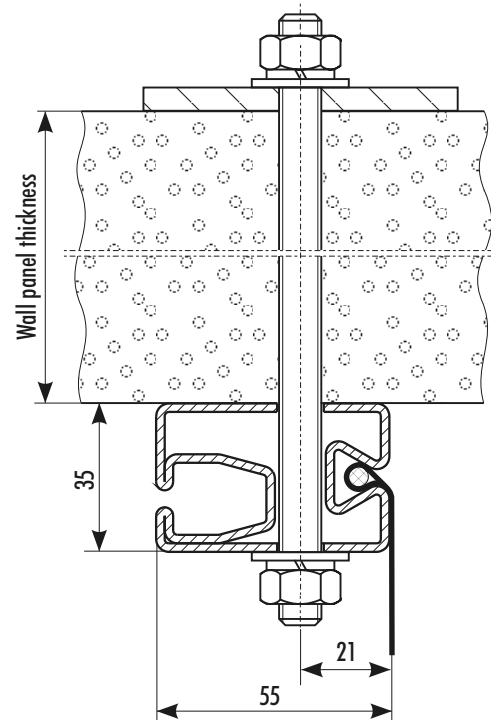
Nani Verladetechnik GmbH & Co. KG
Siegerslebener Str. 12, D-39365 Eilsleben
Tel: (039 409) 914 0, Fax: (039 409) 345

Fixing methods for NANI-Dockshelters Model P-TAD / LP-TAD

A. Brickwork / Concrete

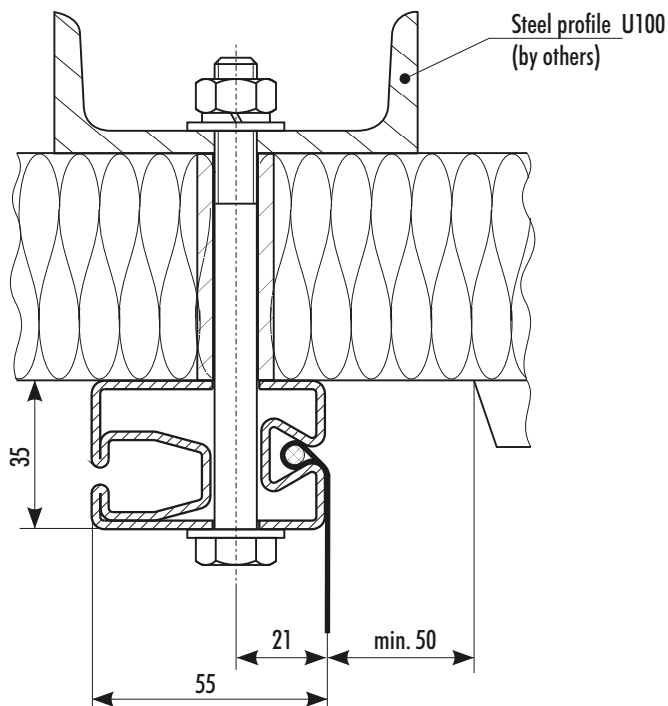


B. Precast space concrete

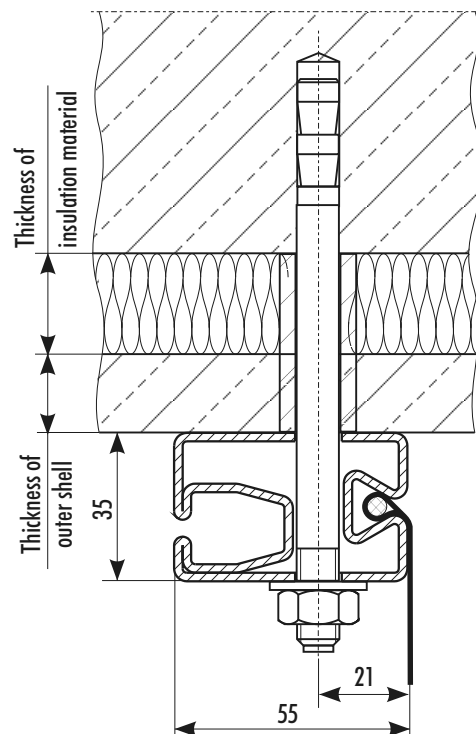


C. Insulated wall panel

ATTENTION! The area for fixing the dockshelter must be flat and even.

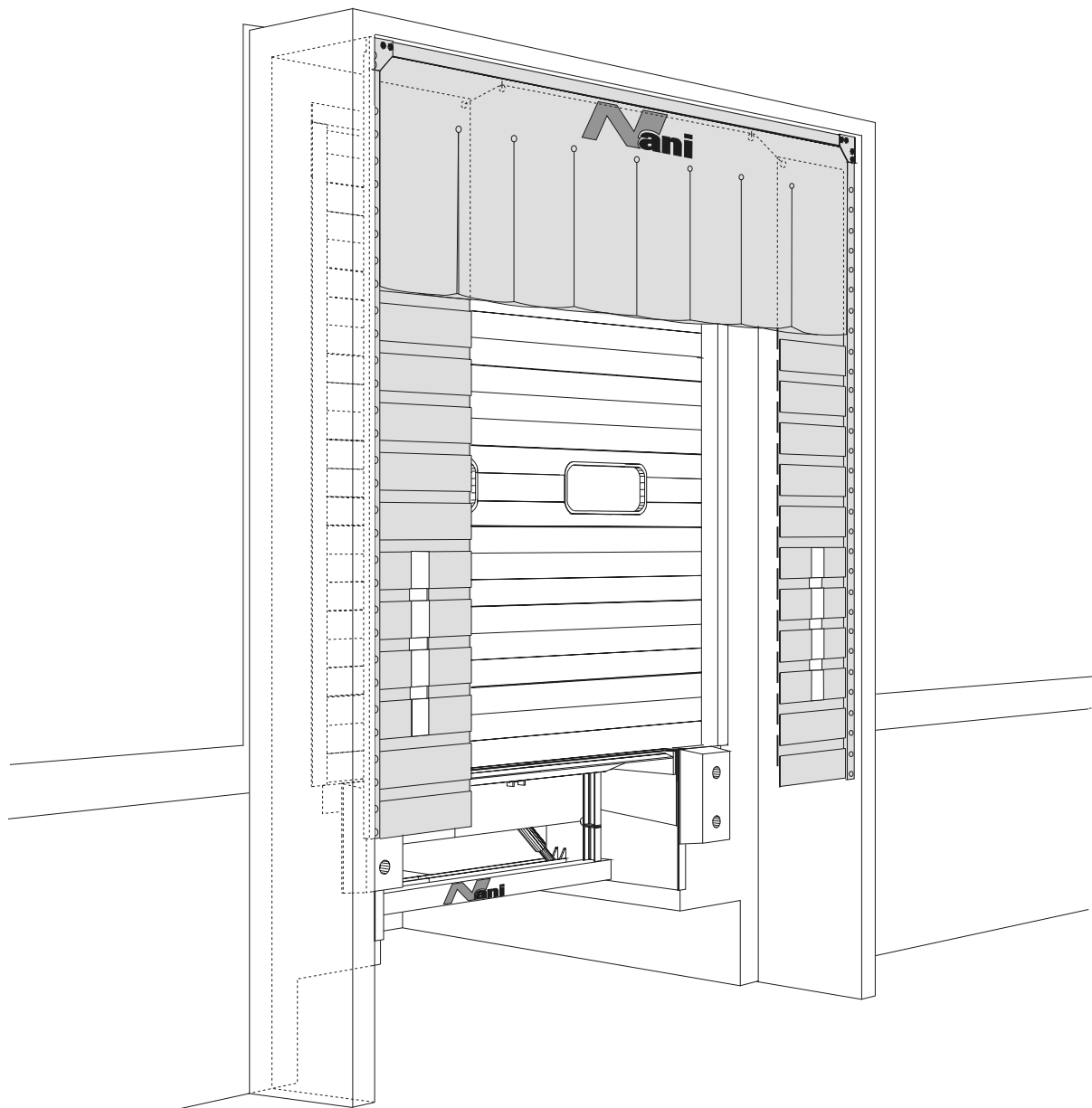


D. Sandwich panel



Changes to specification maybe made without prior notification.

T13-9409-E



Nani-Dockshelter L-TAD-V protects the personnel and goods from inclement weather conditions when loading / unloading at the dock.

The dockshelter is a heavy duty dockshelter with a frame of steel profiles and collapsible mechanism. The side curtains are made up of 9 mm thick steel reinforced rubber flaps, these flaps are installed into the side frame in an overlapping situation.

The head curtain is double thickness 3 mm PVC. It has vertical slats formed into the head curtain

and again this is installed into an overlapping situation. This combination gives you a very hard wearing dockshelter even under the harshest of conditions. Because of the complete lamellation adapts the dockshelter optimally to the truck and seals it outstanding. The steel-cord-lamellas have a yellow vertical guide stripe.

All steel parts are galvanised serially. To the scope of supply belong the complete dock shelter and all mounting elements and sealing materials. Edge-sealings are optional.

Changes to specification maybe made without prior notification.

T23-9508-E

Nani
VERLADETECHNIK

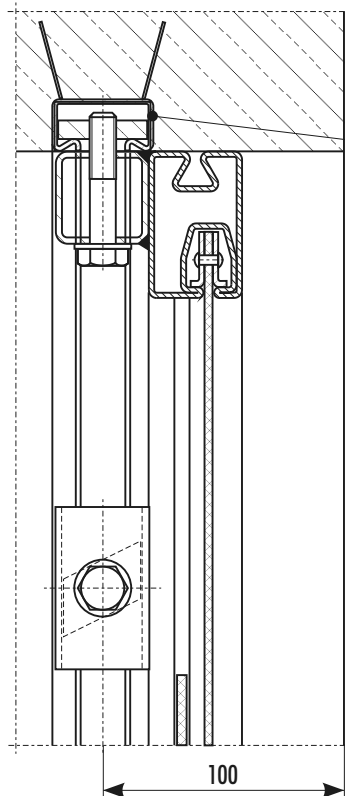
...for optimal loading

<http://www.nani.de> E-mail: info@nani.de

Nani Verladetechnik GmbH & Co. KG
Siegerslebener Str. 12, D-39365 Eilsleben
Tel: (039 409) 914 0, Fax: (039 409) 345

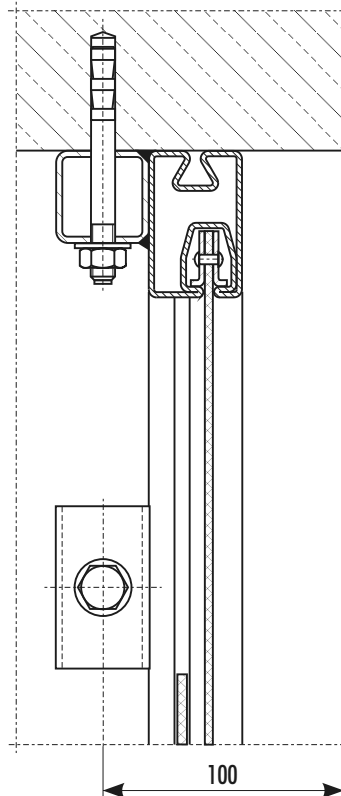
Fixing methods for NANI-Dockshelters Model P-TAD-V / LP-TAD-V

A. Concrete framework with built-in steel fixing channel

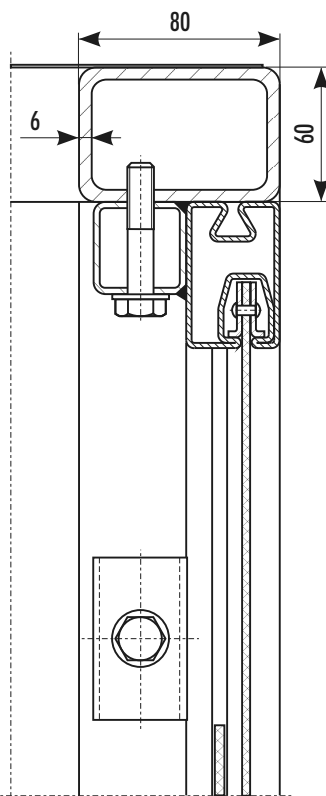


Recommended type
HTA 40/22 to be
supplied and
installed by contractor

B. Concrete frame using Expandable Bolt Fixings



C. Steel section Sub-Frame



Changes to specification maybe
made without prior notification.

TI 4-2409-E