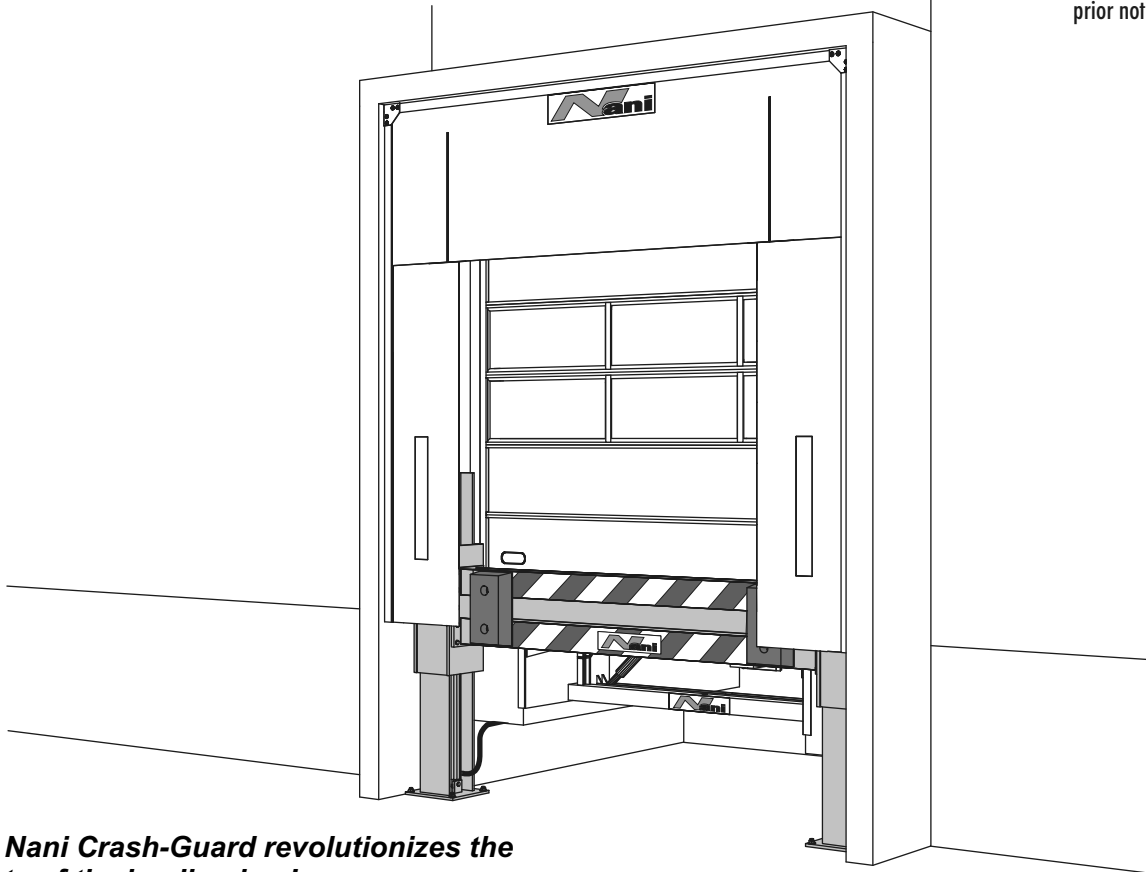


Nani Crash-Guard Type AHB, hydraulic

Changes to specification
maybe made without
prior notification.



The Nani Crash-Guard revolutionizes the safety of the loading bay!

This crash-guard is a safety product of highest quality, functionality and reliability.

Operator safety in front of the dockleveller

Should a person be standing between the dock and the truck while it drives backwards, the crash-guard provides to the person a survival space between the dockleveller and the truck.

It protects the facade

Because the crash-guard is wider than the doorway and because the crash-beam extends continuously from right to left, the truck will always be stopped by the Nani Crash-Guard during the docking procedure; this is true even if the truck docks excentrically. The crash-guard thus protects the complete loading bay and facade.

It protects the loading doors

The load floor of ,interchangeable platforms for

flat-bed trucks', containers and refrigerated vehicles is up to 1.70 m high, the ramp-height today is between 1.20m and 1.30 m. During the docking procedure at the loading bay the truck can easily drive beyond the ramp and run into the door.

This is perfectly prevented by the Nani crash-guard, because the Nani crash-guard can be adjusted to the required height.

It protects the vehicles

The standard-buffers typically reach between 40 and 60 cm below the ramp level . However, the lighting of the vehicles in many cases is located in that area and as a result the lighting frequently is damaged, thereby jeopardizing road safety.

The Nani crash-guard is placed above the ramp edge and thus eliminates such damage while at the same time saving cost and improving road safety.

RB01-0310-E

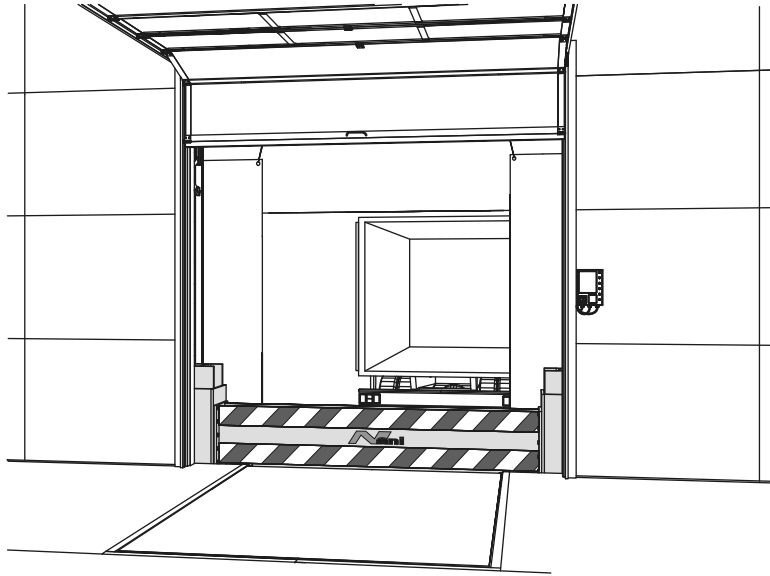


...for optimal loading

Internet: www.nani.de · E-mail: info@nani.de

Nani Verladetechnik GmbH & Co. KG
Siegerslebener Str. 12, D-39365 Eilsleben
Tel: (039 409) 914 0, Fax: (039 409) 345

Nani Crash-Guard Type AHB, hydraulic



It protects the operators on the dockleveller and in front of it!

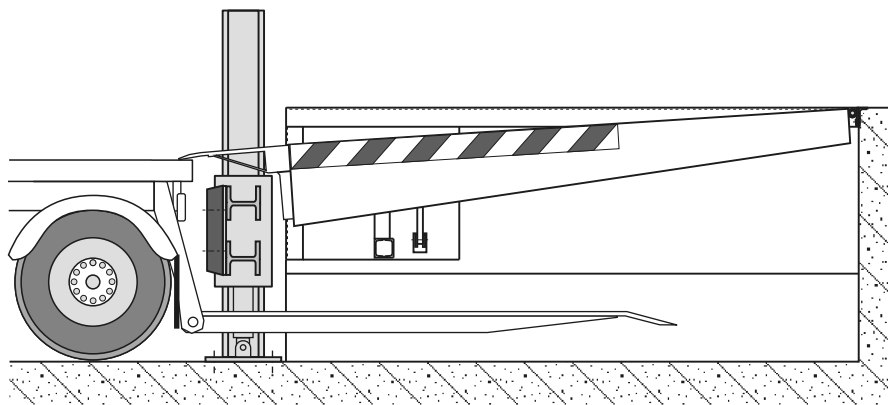
When no truck is in the loading bay, the crash guard is automatically in its top position, i. e. it stands 400 - 500 mm above the dockleveller.

If the door is opened while no truck is docked at the loading bay, the crash-guard serves as a barrier and as a run-off-protection. This keeps a forklift from falling off the dock.

Special applications

During loading procedures of fresh meat or when loading occurs in tempered storages the doors of the truck should only be opened when the loading position is reached. Therefore the loading ramp with the dockleveller needs to be lowered until the doors of the truck can freely be opened above the ramp. At a thus lowered loading bay damages of the wall of the hall, of its doors, as well as of the trucks' lighting system are can be eliminated by 100% by the Nani crash-guard!

Traffic lights do not ensure that!



Tail-lift access opening underneath the leveller

If the crash guard is moved down for the loading, then it is still possible to use the loading dock with truck with tails lifts that still can go underneath the leveller into the tail-lift opening.

RB02-0310-E

Changes to specification maybe made without prior notification.

Nani
VERLADETECHNIK

...for optimal loading

Internet: www.nani.de · E-mail: info@nani.de

Nani Verladetechnik GmbH & Co. KG
Siegerslebener Str. 12, D-39365 Eilsleben
Tel: (039 409) 914 0, Fax: (039 409) 345