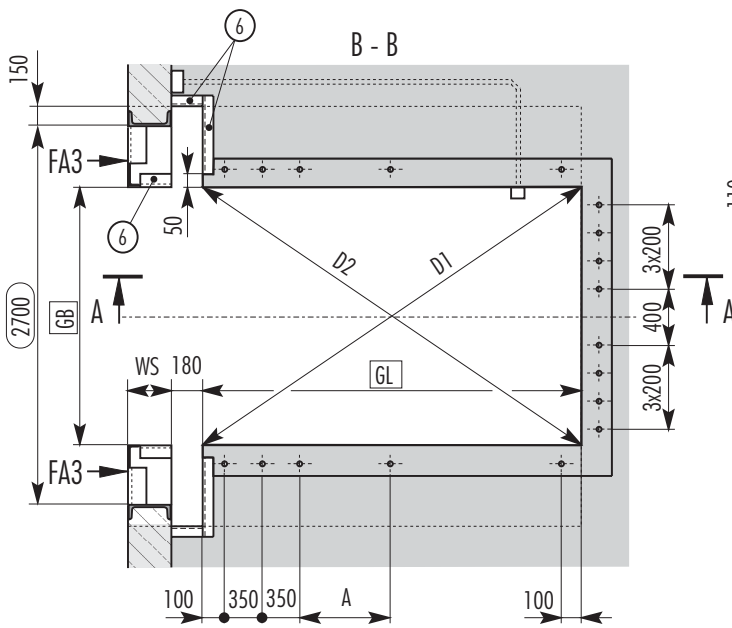
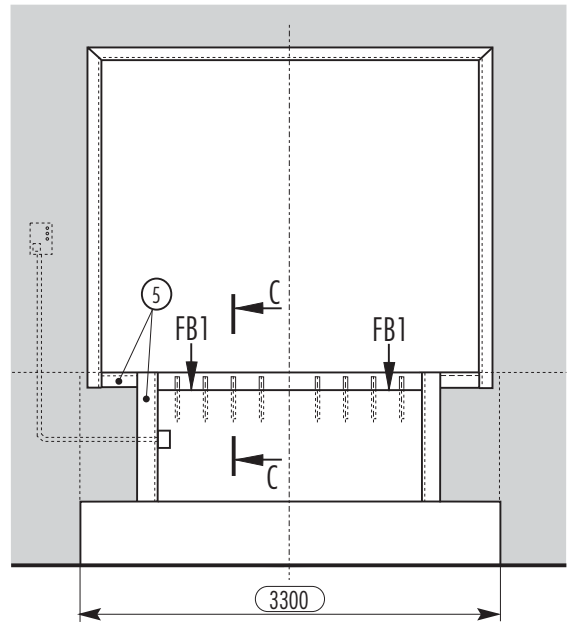
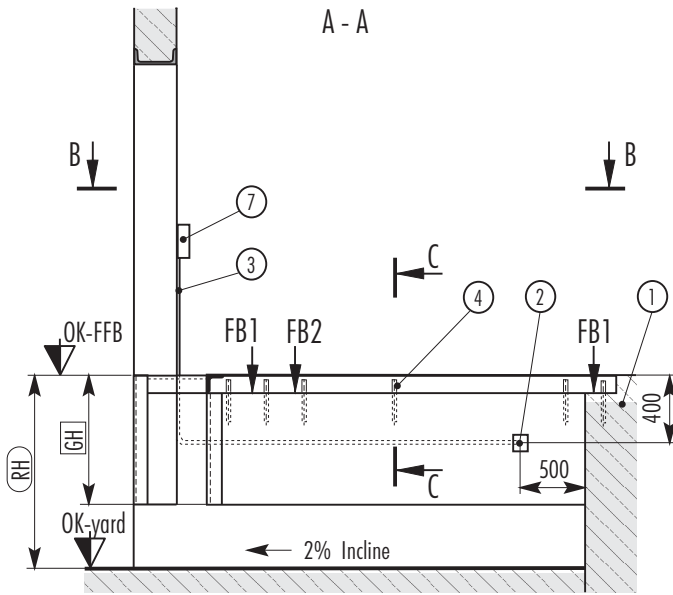


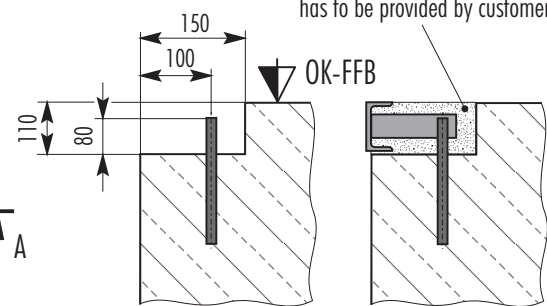
Nani - Dockleveller. Compact construction method for an ISO-Loading dock.

Attention! The measurements \square have to be kept exactly. The measurements \circ suggestions.
It has to be attended to the orthogonality of the pit. Diagonal D1 = Diagonal D2

Changes to specification maybe made without prior notification.



Attention! After the mounting of the leveller the plugging with concrete B25 has to be provided by customer!



Scope of supply provided by customer:

- ① Installation point
- ② Terminal box with 12 clamps
- ③ Ductwork $\varnothing 50$ with conductor 12 x 1,5²
- ④ concrete-steel $\varnothing 20 \times 200$, weldable
- ⑤ Angle 120x80x10
- ⑥ Angle 100x50x8

Scope of supply manufacturer dockleveller:

- ⑦ Operating unit

The wall-thickness WS has to be dimensioned according to static requirements and in consideration of the truck "crash-into-force" FA3.

Important! For the dimensions GB, GL, GH deemed the following to be the tolerance $\begin{matrix} +20 \\ 0 \end{matrix}$

Measurements for installation point (all measurements in mm)

Leveller size	GB	GL	GH	RH	A
1	2060	2000	850	1300	550
2	2060	2500	850	1300	800
3	2060	3000	850	1300	1050
4	2060	4000	950	1300	1550

Capacity for all sizes
40 kN or 60kN.
All other capacities
and dimensions on request.

Strain of the hall floor in resting position (FB1) in case of emergency stop (FB2)

Capacity	FB1 (KN)	FB2 (KN)
40 KN	38	34
60 KN	58	52

GR4-9311-E



...for optimal loading

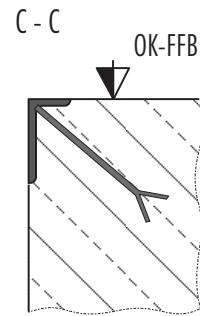
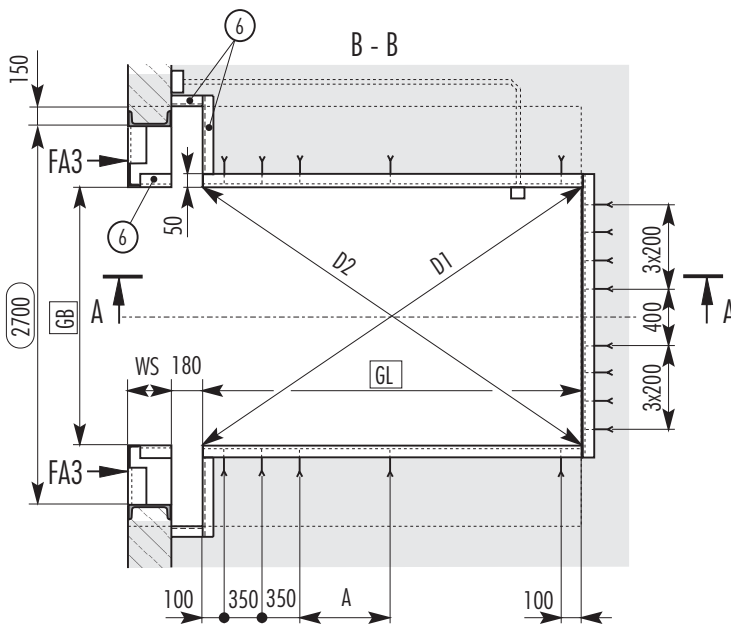
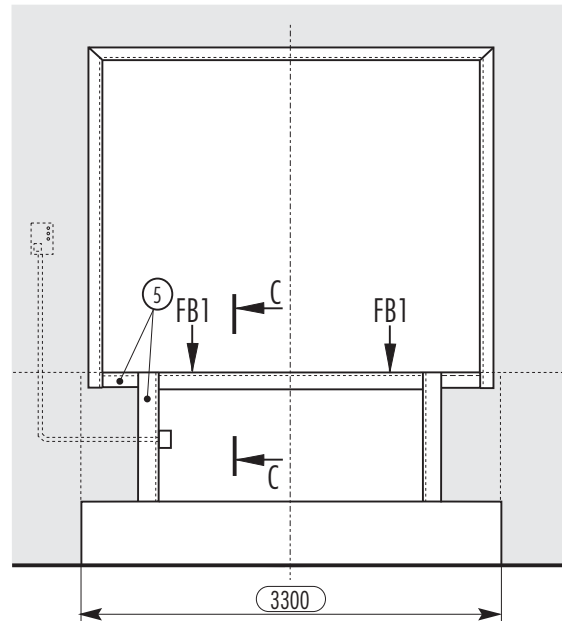
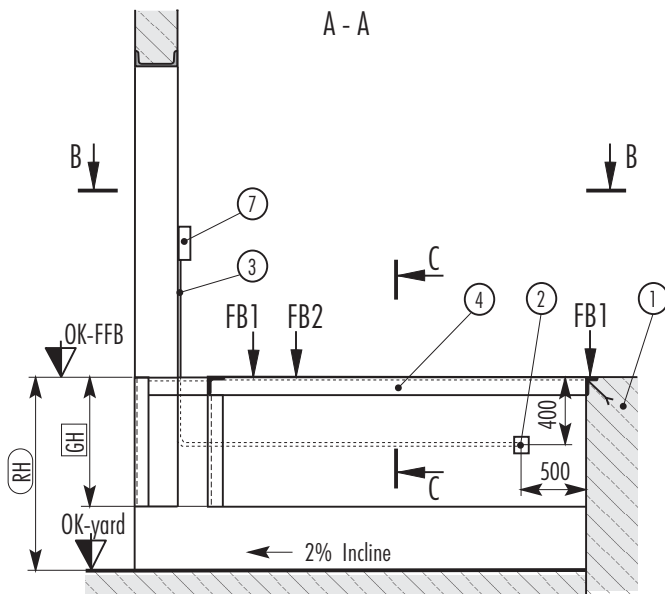
<http://www.nani.de> E-mail: info@nani.de

Nani Verladetechnik GmbH & Co. KG
Siegerslebener Str. 12, D-39365 Eilsleben
Tel: (039 409) 914 0, Fax: (039 409) 345

Nani - Dockleveller. Pre-frame for an ISO-Loading dock.

Attention! The □ dimensions have to be kept exactly. The ○ dimensions are suggestions.
It has to be attended to the orthogonality of the pit. Diagonal D1 = Diagonal D2

Changes to specification maybe made without prior notification.



Scope of supply provided by customer:

- ① Installation point
- ② Terminal box with 12 clamps
- ③ Ductwork ø50 with conductor 12 x1,5²
- ⑤ Angle 120x80x10
- ⑥ Angle 100x50x8

Scope of supply manufacturer docklevellers:

- ④ Installation frame L100x50x8
- ⑦ Operating unit

The wall-thickness WS has to be dimensioned according to static requirements and in consideration of the truck "crash-into-force" FA3.

Important! For the dimensions GB, GL, GH deemed the following to be the tolerance $\begin{matrix} +20 \\ 0 \end{matrix}$

Dimensions for installation point (all dimensions in mm)

Leveller size	GB	GL	GH	RH	A
1	2040	2000	850	1300	550
2	2040	2500	850	1300	800
3	2040	3000	850	1300	1050
4	2040	4000	950	1300	1550

Capacity for all sizes 40 kN or 60kN.

All other capacities and dimensions on request.

Strain of the hall floor in resting position (Fb1) in case of emergency stop (FB2)

Capacity	FB1 (KN)	FB2 (KN)
40 KN	38	34
60 KN	58	52

GR5-2312-E



...for optimal loading

<http://www.nani.de> E-mail: info@nani.de

Nani Verladetechnik GmbH & Co. KG
Siegelslebener Str. 12, D-39365 Eilsleben
Tel: (039 409)914 0, Fax: (039 409)345